

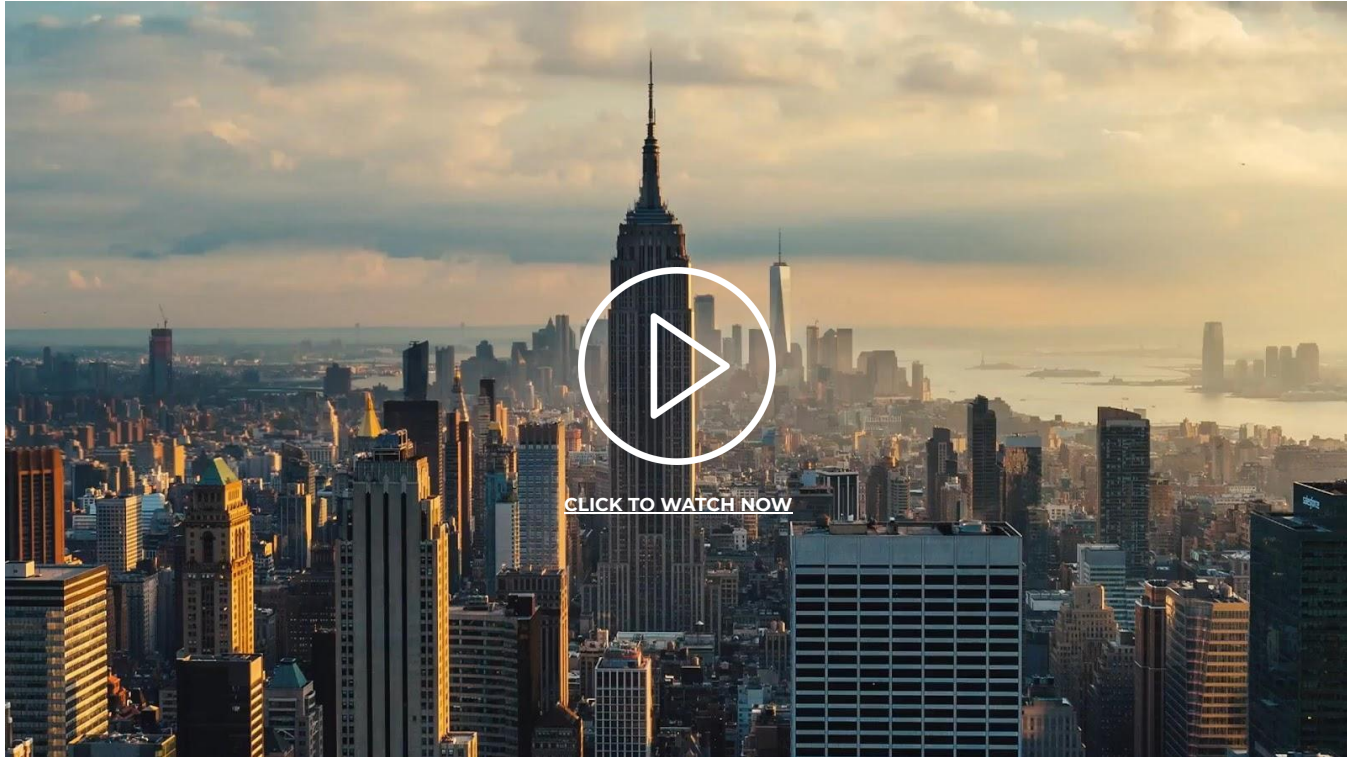


HYATT CENTRIC™

JANAKPURI
NEW DELHI

DRINK. EAT. EXPLORE

DISCOVER THE EXPLORER IN YOU.



ACCESSIBILITY

Located adjacent to Janakpuri West Metro Station and District Centre, Hyatt Centric Janakpuri New Delhi is accessible for **sightseeing, shopping and business.**



- Station adjacent to the hotel
- Blue Line
- Magenta Line



- 4 metro stops away from Janakpuri West Metro Station to Tagore Garden (9 minutes)
- 15 Minutes drivable distance



- Adjacent to the hotel
- Has shops, food supermarkets, non-retail services such as banks and restaurants



- Terminal 1, 5 metro stops away from Janakpuri West Metro Station (11 minutes)
- 8.5 Kms away and 35 Minutes drivable distance from the hotel

HYATT CENTRIC JANAKPURI NEW DELHI

For every guest to discover something new, there is Hyatt Centric Janakpuri New Delhi.

- **224** spacious and functional guest rooms
- A culinary destination for every occasion, **Kitchen District**
- **52,000** Sq. Ft. of events space for every occasion



ROOMS & SUITES

224 Rooms & Suites



Kind Bedrooms - 134



Twin Bedrooms - 66



Suites - 24





DINING

KITCHEN DISTRICT

Modern in approach. Traditional at core

Kitchen District, the right blend of traditional and modern culinary experience. One can savour vibrant flavours of the city paired with locally- inspired creative cocktails. Your taste buds will go on a trip.

- 160 covers
- Food from the subcontinent of India
- Refreshing beverage menu
- Bar



KITCHEN DISTRICT



DINING

HYATT CENTRIC LOUNGE

Hyatt Centric Lounge is a perfect meeting spot where locals and guests can visit anytime, for:

- a morning chai or coffee
- afternoon meeting
- evening craft mocktails
- house-baked pastries and sandwiches



EVENTS

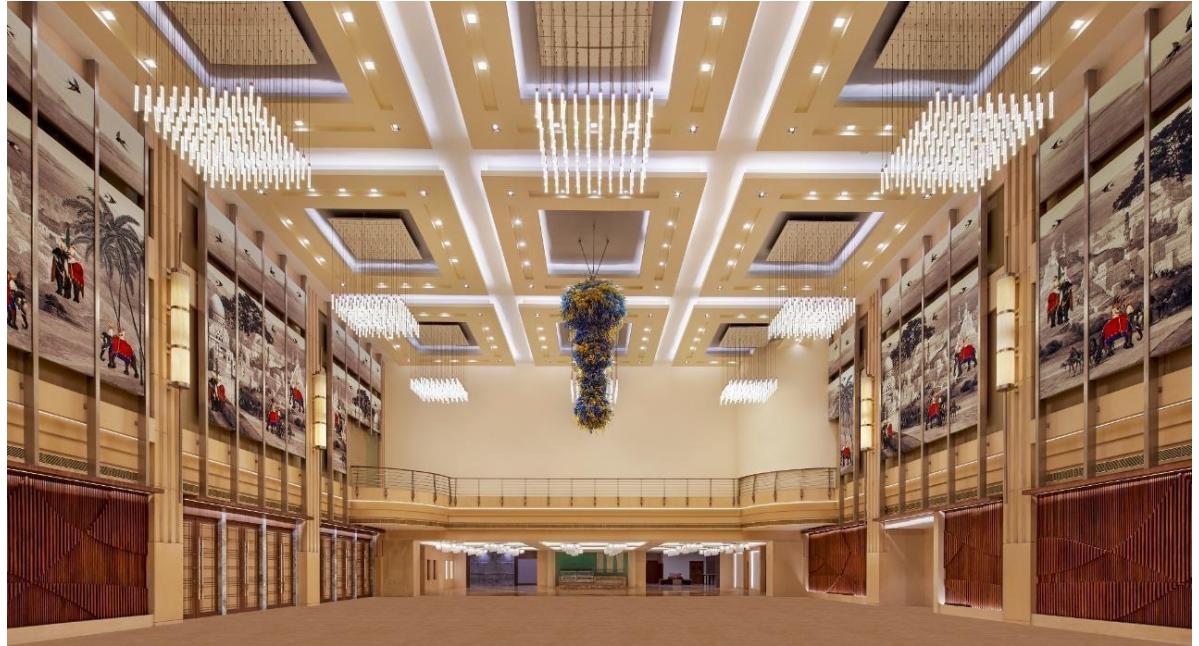
Over 52,000 Sq. Ft. of event spaces, featuring four indoor venues and two outdoor venues spread over the ground and first floor ideal for meetings, intimate get together and weddings.



HYATT CENTRIC BALLROOM

- **7,500 Sq. Ft.** of event venue
- Natural light in the Ballroom
- Ceiling height of 40 feet
- Opens into a total of 20872 Sq ft of flexible space for large gathering

Venue	Sq. Ft.
Hyatt Centric Ballroom	7500
Foyer 1	3890
Foyer 2	3744
Meeting room	1800
Living room	2223
Foyer 3	1715
TOTAL	20872

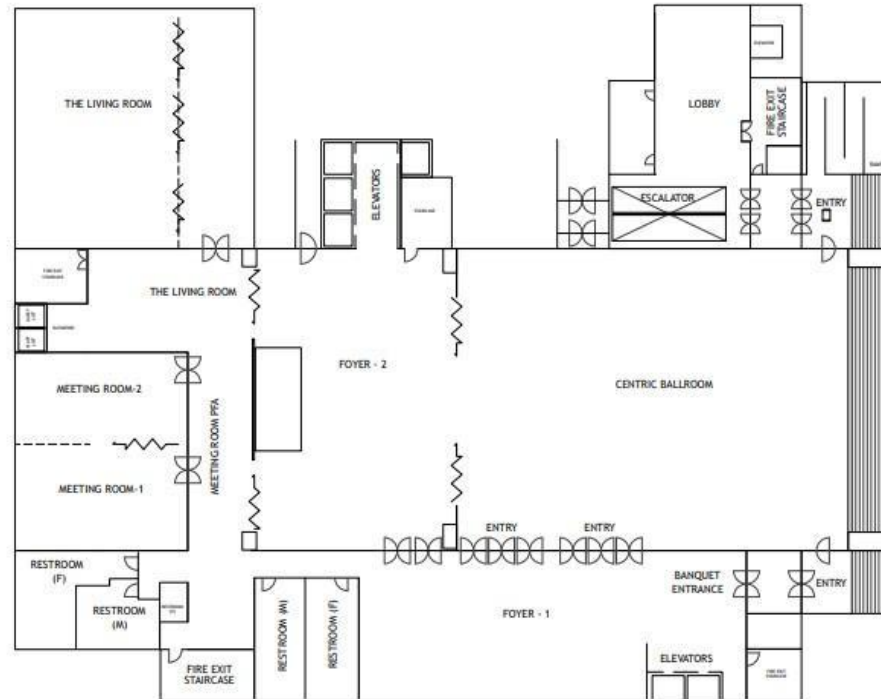




HYATT CENTRIC BALLROOM PRE FUNCTION SPACES



1ST FLOOR



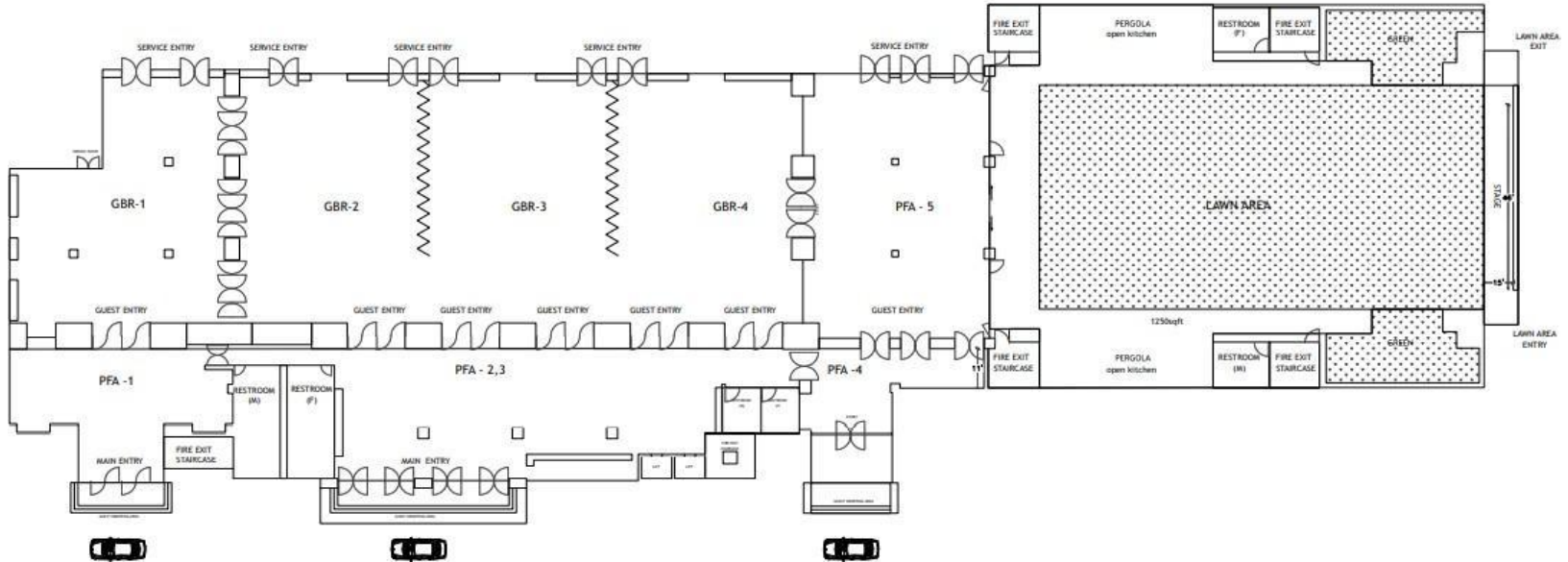
GRAND BALLROOM & LAWN

- Divisible into four parts with separate pre function space
- Located on the ground floor
- Separate hotel entry and exit gate for Ballroom
- Opens into a lawn of 7,200 Sq. Ft.

Venue	Sq. Ft.
Grand Ballroom	13877
Foyer	10113
Lawn	7300
TOTAL	31290



Ground Floor





Room Name	Room Dimensions L x W x H	Room Size Sq. Ft.	Banquet	Reception	Theater	Classroom	Conference/ Hollow Square	U-Shape	Boardroom	Caberet/ Cluster
Hyatt Centric Ballroom	100' x 75' x 40'	7500	350	800	600	288	132	120	108	210
The Living Room	57' x 39' x 10'	2223	80	150	100	60	48	40	48	60
The Living Room Pre - function area	43' x 24' x 10'	1032		50						
The Meeting room	45' x 40' x 10'	1800	72	120	96	40	40	40	40	60
Meeting room Pre - function area	51' x 13' x 10'	683		50						
Grand Ballroom	208' x 70' x 13'	13877	450	1350	1100	440	108	180	150	360
Pre-function area	204' x 13' x 10'	10113		500						
Lawn (Including stage area)	106' x 69	7300	300	750						240

TOTAL EVENT SPACE - 52,000 SQFT

YOUR
EXPLORATION HAS
JUST BEGUN.



DRINK. EAT. EXPLORE

